



WSA WOOSUNG AUTOCON

HAVE MANUFACTURED LOTS KINDS OF CONVERTING MACHINES INTEGRATED HABASIT PLASTIC BELT, AND HAVE RECEIVED VERY POSITIVE FEEDBACK FROM CUSTOMERS.....

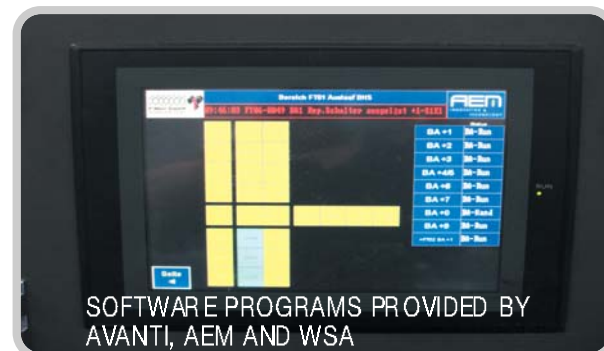
PLASTIC BELT CONVEYOR

WSA STANDARD

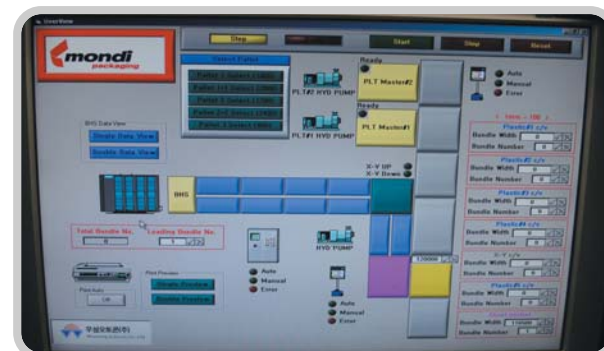
- HABASIT PLASTIC BELT AND SPROCKET
- CONVEYOR SPEED : 40 M/MIN, 300~400MM(HEIGHT)
- STACK WEIGHT : MAX. 6000KG DEPEND UPON MOTOR
- EUROPEAN GEARED MOTORS
- NON FLAMMABLE EUROPEAN WOOD
- CONTROLLED BY PROVED SOFTWARE
- COLOR : PER CUSTOMER REQUEST
- SICK SENSORS
- TELEMECANIQUE SWITCHES
- TOUCH SCREEN OPERATOR PANEL

DESIGN STANDARD

- HEAVY DUTY CONSTRUCTION
- HARDENED GEAR TRAIN
- SOLID STEEL FRAMES
- TOTAL PRE - WIRING OF UNIT TO DRIVE CABINET
- ELECTRICITY : 3 PHASE, 220 / 380 OR 400VAC, 50 HZ
- CONTROL POWER : DC 24V
- COMPRESSED AIR : 6 ~ 7 BAR
- LANGUAGE : PER CUSTOMER REQUEST
- UNIT AND SCALE : METRIC



SOFTWARE PROGRAMS PROVIDED BY AVANTI, AEM AND WSA



WILL SAVE LOTS MONEY FROM SHEETS DAMAGE (BOTTOM SHEET OF STACKS) AFTER ONE YEAR WHEN USE PLASTIC BELT INSTEAD OF ROLLER CONVEYOR.....

WOOSUNG AUTOCON



PLASTIC BELT CONVEYOR SYSTEM

NOW OFFERING.....

WSA PLASTIC BELT CONVEYOR, MOVING CAR AND TURN TABLE PROVED TO HAVE GOOD QUALITY, LONGER LIFE AND PERFORMANCE IN FIELD OF PLASTIC MACHINERY IN THE WORLD.....



WOOSUNG AUTOCON CO., LTD.

<http://www.woosungautocon.com>

SHIHW INDUSTRIAL COMPLEX 2BA-803,
JUNGWANG-DONG SHIHEUNG-SI, KOREA

TEL : + 82 (0)31 431 6297/6298

FAX : + 82 (0)31 431 6081

E-MAIL : woosung_auto@naver.com

woosung_autocon@yahoo.com



PROVED TO BE BEST QUALITY AND PERFORMANCE FROM FIELD EXPERIENCES.....

AUTO MOVING CAR

- HABASIT PLASTIC BELT AND SPROCKET
- SEW GEARED MOTORS
- EUROPEAN WOOD
- FREQUENCY INVERTER CONTROL
- COMMUNICATION(DEVICENET ETC.)
- CONVEYOR SPEED : 18 M/MIN, CAR SPEED : MAX. 120M/MIN, 300~400MM(HEIGHT)
- STEEL RAIL AND AKAPP TROLLEY
- SICK SAFETY SENSOR(OPTIONAL)
- SICK LASER SENSOR FOR POSITION COUNTING
- SICK SENSORS
- TELEMECANIQUE SWITCH
- COLOR : PER CUSTOMER REQUEST



COMMON DESIGN STANDARD

- HEAVY DUTY CONSTRUCTION
- SOLID STEEL FRAMES
- HARDENED GEAR TRAIN
- ELECTRICITY : 3 PHASE, 220 / 380 OR 400VAC, 50 HZ PER CUSTOMER REQUEST
- CONTROL POWER : DC 24V
- LANGUAGE : PER CUSTOMER REQUEST
- UNIT AND SCALE : METRIC

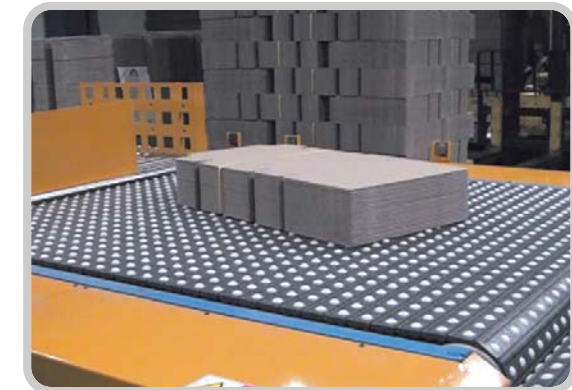
WSA HAVE SUPPLIED TOTAL TECHNICAL SUPPORTS TO CUSTOMERS IN ORDER TO REDUCE CUSTOMER'S EXPENSE BY IDEAL LAYOUT AND ENOUGH DISCUSSIONS...



UTILIZATION OF PLASTIC BELT CONVEYOR



- RADIUS PLASTIC BELT CONVEYOR
- PLASTIC X-Y CONVEYOR
- PLASTIC BUNDLE CONVEYOR



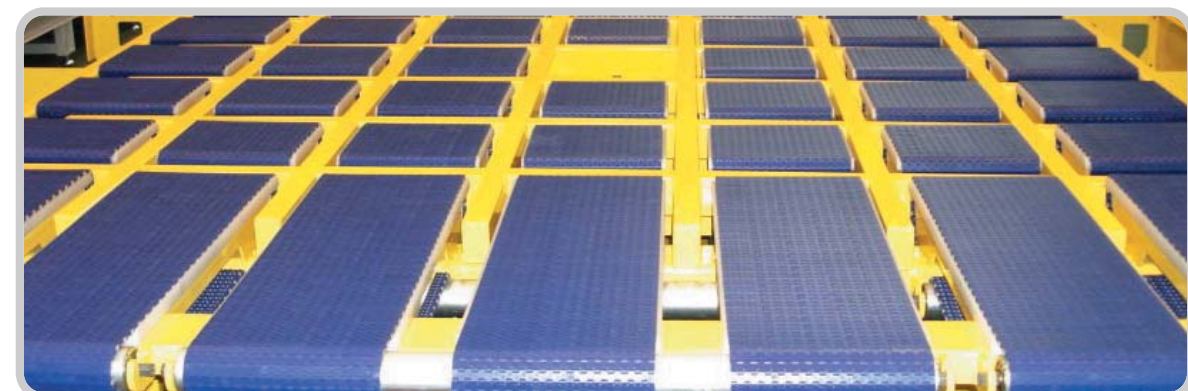
- PLASTIC BALL ROLLER TURN TABLE FOR 0° ~ 360° BUNDLE TURNING
- PLASTIC BALL ROLLER CENTERING CONVEYOR FOR MULTIPLE DIRECTION OF BUNDLE



- TURN TABLE FOR 0° ~ 360° STACK TURN WITHOUT STACK STOPPING



- PLASTIC X-Y CONVEYOR FOR HEAVY WEIGHT STACK AND BUNDLE



- PLASTIC TURN TABLE FOR 90° , 180° , 270° AND 360° BUNDLE ROTATION